

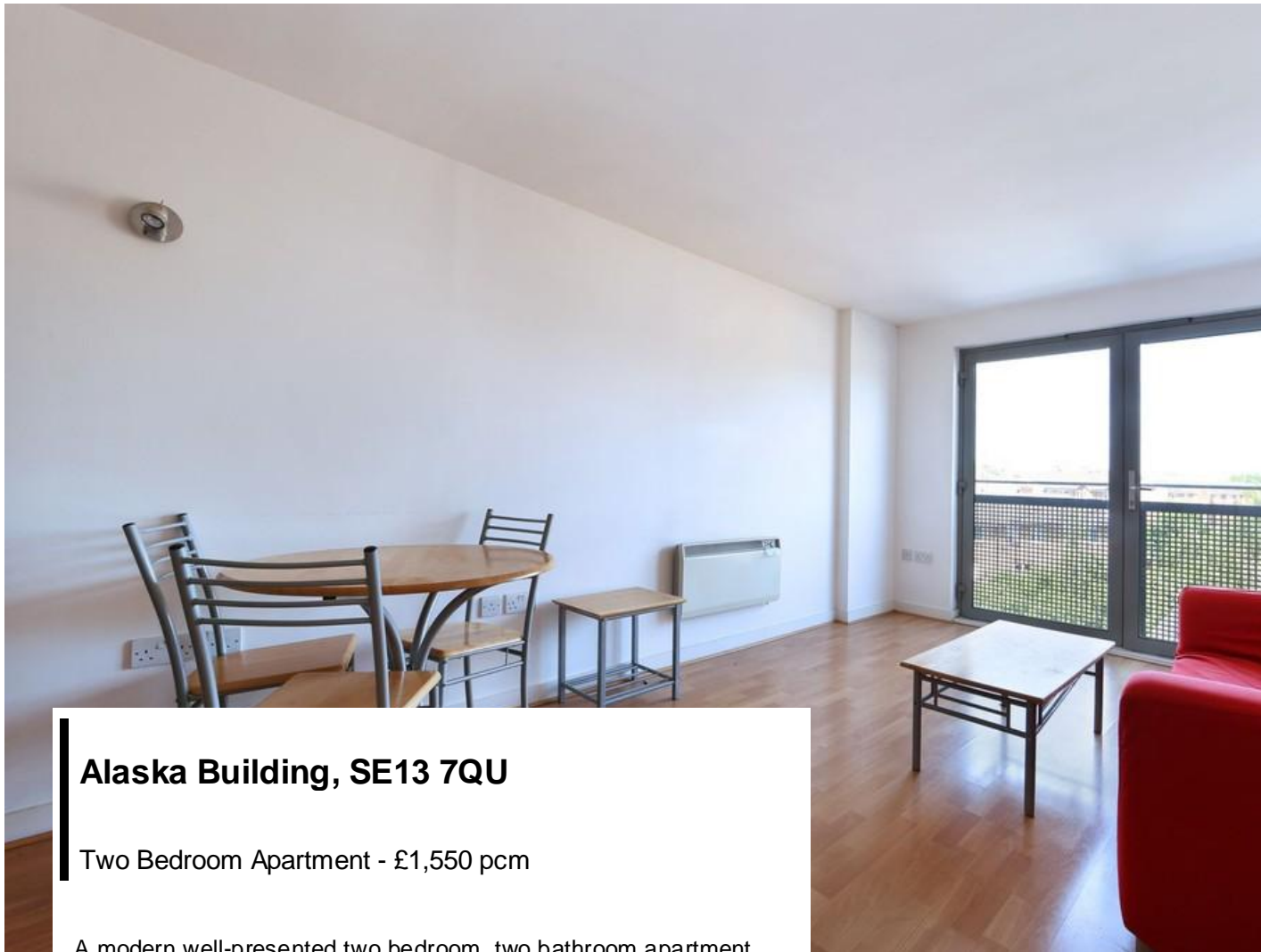
www.madisonbrook.com



MADISON BROOK INTERNATIONAL



Alaska Building, London, SE13 7QU
Two Bedroom Apartment - £1,550 pcm



Alaska Building, SE13 7QU

Two Bedroom Apartment - £1,550 pcm

A modern well-presented two bedroom, two bathroom apartment located in the popular Alaska Building.

With a bright and spacious open plan lounge and kitchen, well-proportioned double bedrooms, chic family bathroom and en-suite this style of apartment is well sought after. In addition to this, you have the benefit of a 24 hour concierge service, swimming pool and easy access to the beautiful green spaces on offer in Greenwich.

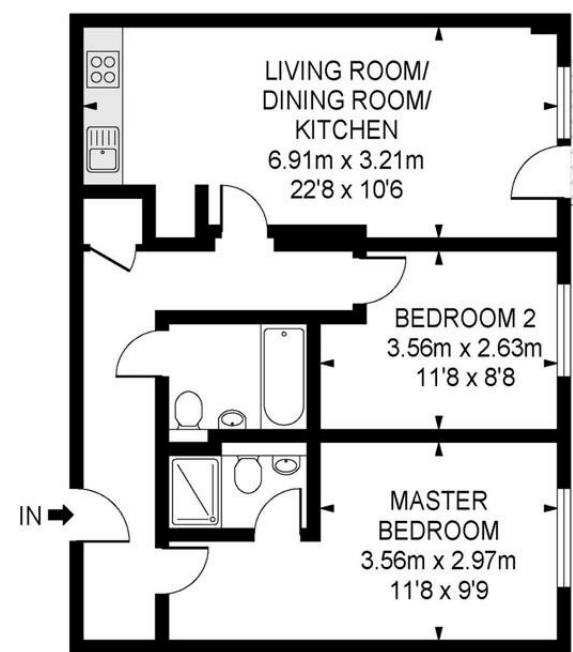
This property is located within a modern residential development and is moments away from Deptford Bridge DLR and National Rail Station. The local amenities of both Greenwich and Lewisham are also within easy reach.

KEY FEATURES

- Two Bedroom Apartment
- 3rd Floor Location
- 678 Sq Ft Internally
- Swimming Pool
- Close to Deptford Bridge DLR
- Available 15th March 2018
- 24 Hour Concierge
- Admin Fees: £200.00 Per Property

Local Authority Lewisham London Borough Council
Council Tax Band C

Alaska Building



3rd Floor

APPROX GROSS INTERNAL FLOOR AREA 678.34 SQ FT - 63.02 SQ M

Whilst every attempt has been made to ensure the accuracy of the floor plan contained here, measurements of doors, windows, rooms and any other items are approximates and no responsibility is taken for any error, omission or mis-statement. This plan is for illustrative purposes only and should be used as such by any prospective purchaser. The service, system and appliances shown have not been tested and no guarantee as to their operability or efficiency can be given.

© SpacePhoto
Photography and Floor Plan

Madison Brook
Lewisham
43 Loampit Vale,
London, SE13 7FT

lewisham@madisonbrook.com
020 3946 6200

We have prepared these property particulars as a general guide to a broad description of the property. They are not intended to constitute part of an offer or contract. We have not carried out a structural survey and the services, appliances and specifications have not been tested. All photographs, measurements, floorplans and distances referred to are given as a guide only and should not be relied upon for the purchase of carpets or any other fixtures or fittings. Lease details, service charges and ground rent (where applicable) and council tax are given as a guide only and should be checked and confirmed by your Solicitor prior to exchange of contracts. The copy right of all details, photographs and floorplans remain exclusive to Madison Brook International.

MADISON BROOK
INTERNATIONAL